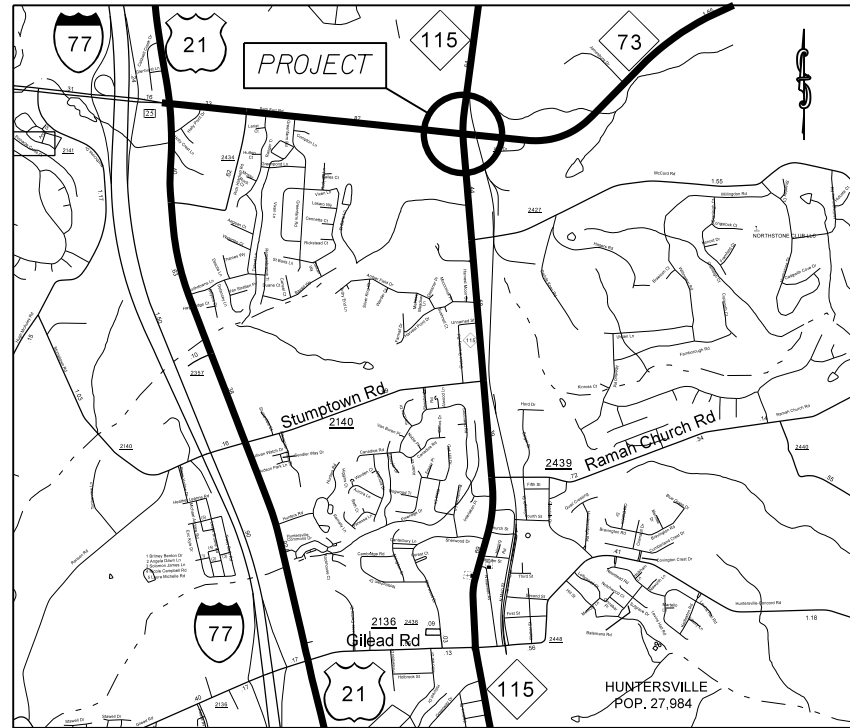


TIP: R-2632AC

PROJECT: 38824.3.3

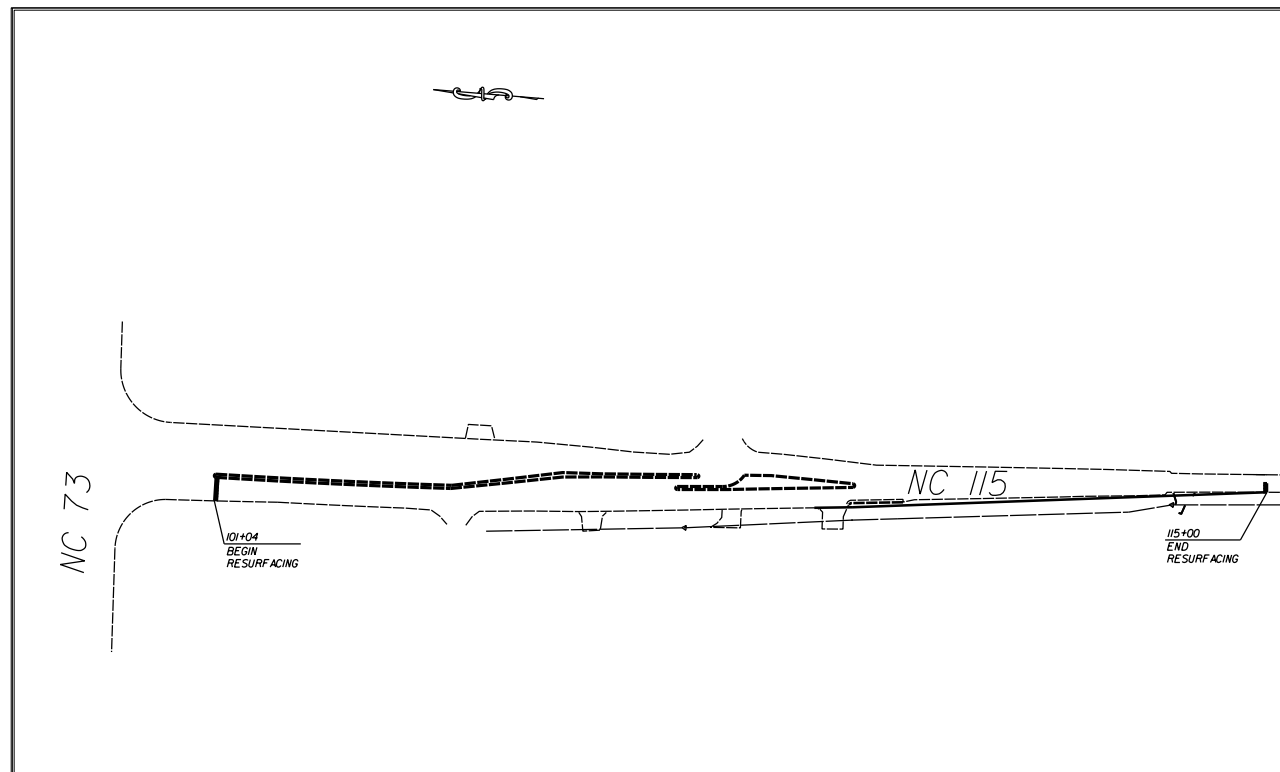


VICINITY MAP NOT TO SCALE

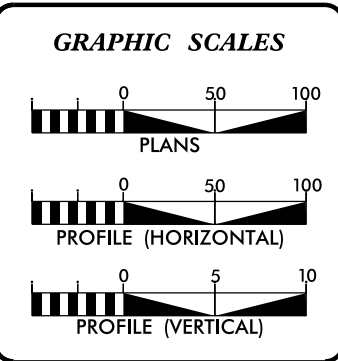
STATE OF NORTH CAROLINA
 DIVISION OF HIGHWAYS
MECKLENBURG COUNTY

LOCATION: NC 115 FROM 50' SOUTH OF NC 73 TO 1396' SOUTH OF NC 73

TYPE OF WORK: GRADING, MILLING, PAVING, AND THERMOPLASTIC PAVEMENT MARKINGS.



STATE	STATE PROJECT REFERENCE NO.	SHEET NO.	TOTAL SHEETS
N.C.	38824.3.3	1	
STATE PROJ. NO.	P.A. PROJ. NO.	DESCRIPTION	
38824.1.1		P.E.	
38824.2.3		RW	
38824.3.3		CONST.	



DESIGN DATA

ADT	=	
ADT	=	
DHV	=	%
D	=	%
T	=	%
V	=	MPH

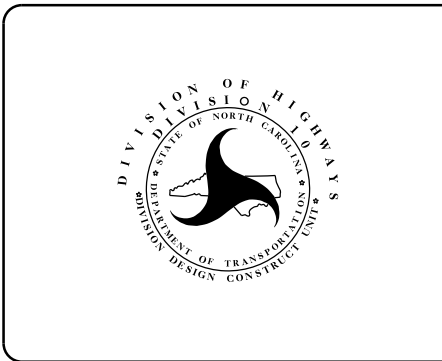
PROJECT LENGTH

LENGTH OF ROADWAY PROJECT 38824.3.R3	=	0.26	MILES
TOTAL LENGTH OF STATE PROJECT 38824.3.R3	=	0.26	MILES

Prepared in the Office of:
DIVISION OF HIGHWAYS
 DIVISION TEN
 DIVISION DESIGN / CONSTRUCT UNIT

2012 STANDARD SPECIFICATIONS

RIGHT OF WAY DATE: _____	RANDY BOWERS PROJECT ENGINEER
LETTING DATE: August 19, 2015	DONALD HARWARD PROJECT DESIGN ENGINEER

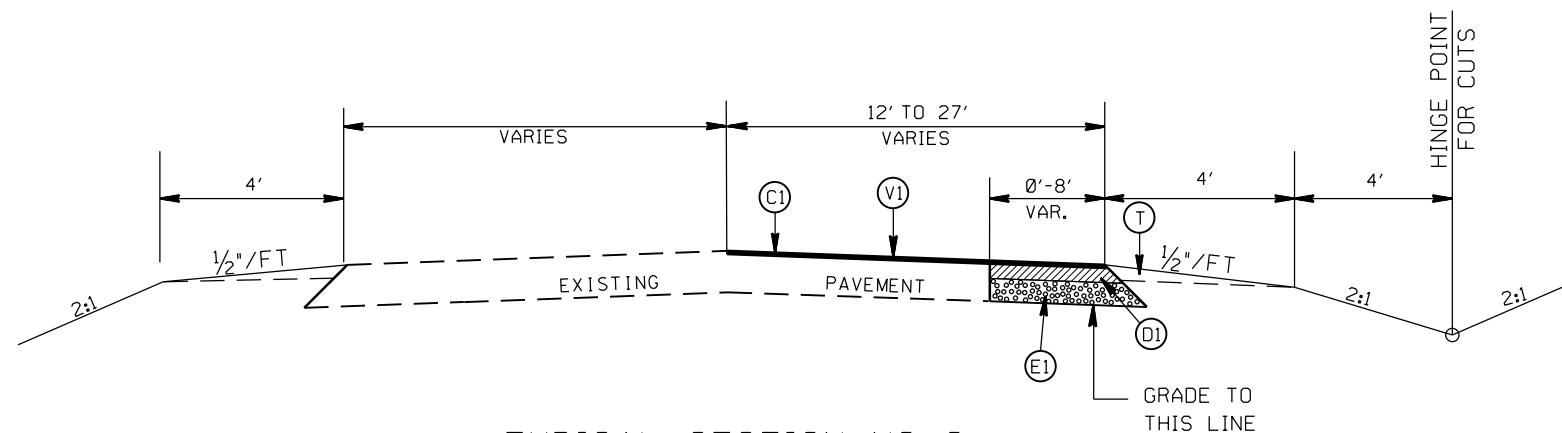


DIVISION OF HIGHWAYS
 STATE OF NORTH CAROLINA

DocuSigned by:
 Randy Bowers
 52A4A66079864B2...
 APPROVED BY
 DDC ENGINEER

7/28/2015
 DATE

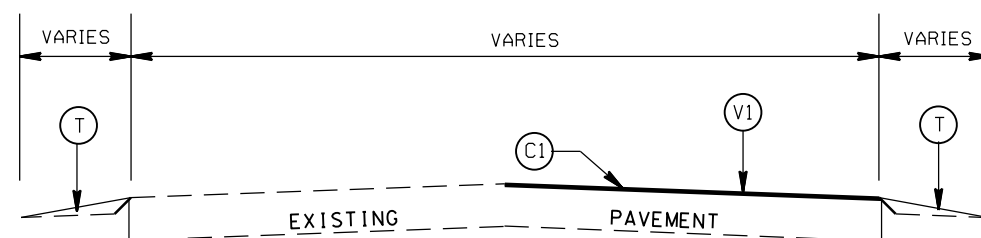
STATE	PROJECT NO.	SHEET NO.	TOTAL SHEETS
N.C.	38824.3.3	2	
F.A. PROJECT NO.			



TYPICAL SECTION NO. 2
STA. 109+41 TO 115+00 -L-

PAVEMENT SCHEDULE

(C1)	PROP. APPROX. 1½" ASPHALT CONC. SURFACE COURSE, TYPE S9.5B, AT AN AVERAGE RATE OF 168 LBS. PER SQ. YD.
(D1)	PROP. APPROX. 4" ASPHALT CONC. INTERMEDIATE COURSE, TYPE I19.0B, AT AN AVERAGE RATE OF 456 LBS. PER SQ. YD.
(E1)	PROP. APPROX. 5.5" ASPHALT CONC. BASE COURSE, TYPE B25.0C, AT AN AVERAGE RATE OF 627 LBS. PER SQ. YD.
(T)	EARTH MATERIAL
(V1)	MILLING ASPHALT PAVEMENT, 1.5" IN DEPTH



TYPICAL SECTION NO. 1
STA. 101+04 TO 109+41 -L-

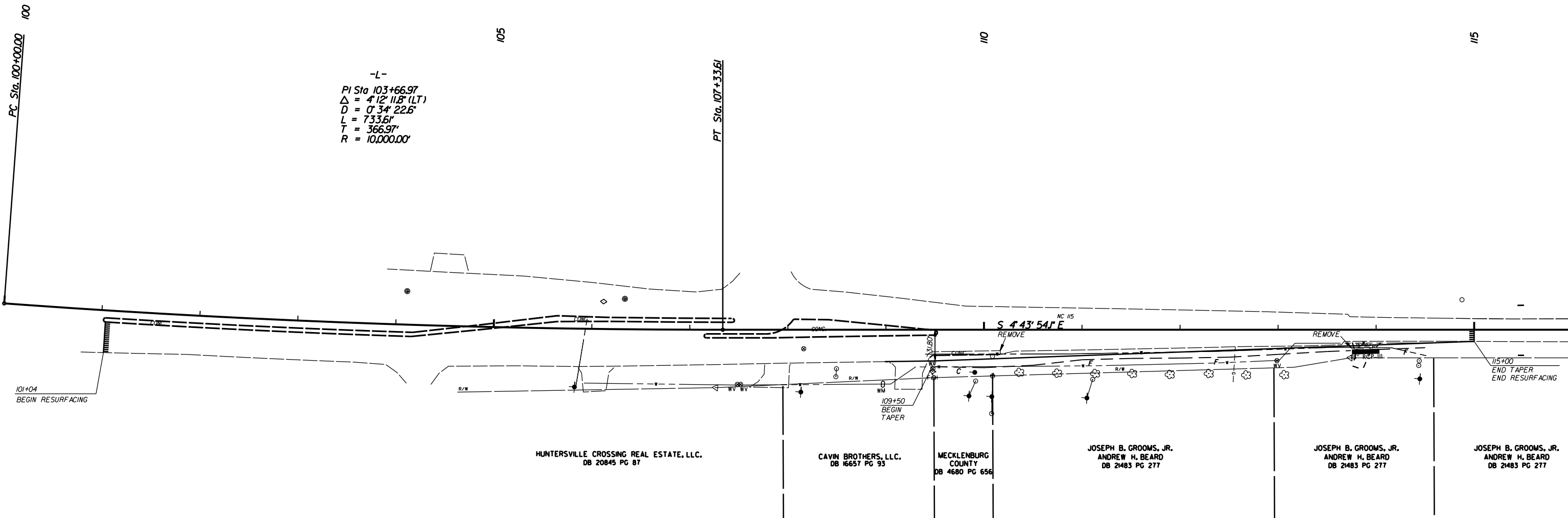
EXTENDING RIGHT THROUGH LANE
AND RIGHT MERGE TAPER
ON NC 115

SCALE	r=50'
DATE	4-2015
DWG. BY	JDH
DESIGN BY	JDH
APPROVED	RWB



REVISIONS	

STATE	PROJECT NO.	SHEET NO.	TOTAL SHEETS
N.C.	38824.3.3	3	
F.A. PROJECT NO.			



101+04
BEGIN RESURFACING

115+00
END TAPER
END RESURFACING

HUNTERSVILLE CROSSING REAL ESTATE, LLC.
DB 20845 PG 87

CAVIN BROTHERS, LLC.
DB 16657 PG 93

MECKLENBURG
COUNTY
DB 4680 PG 656

JOSEPH B. GROOMS, JR.
ANDREW H. BEARD
DB 2483 PG 277

JOSEPH B. GROOMS, JR.
ANDREW H. BEARD
DB 2483 PG 277

JOSEPH B. GROOMS, JR.
ANDREW H. BEARD
DB 2483 PG 277

EXTENDING RIGHT THROUGH LANE
AND RIGHT MERGE TAPER
ON NC 115

SCALE	1"=50'
DATE	3-2015
DWG. BY	JDH
DESIGN BY	JDH
APPROVED	RWB

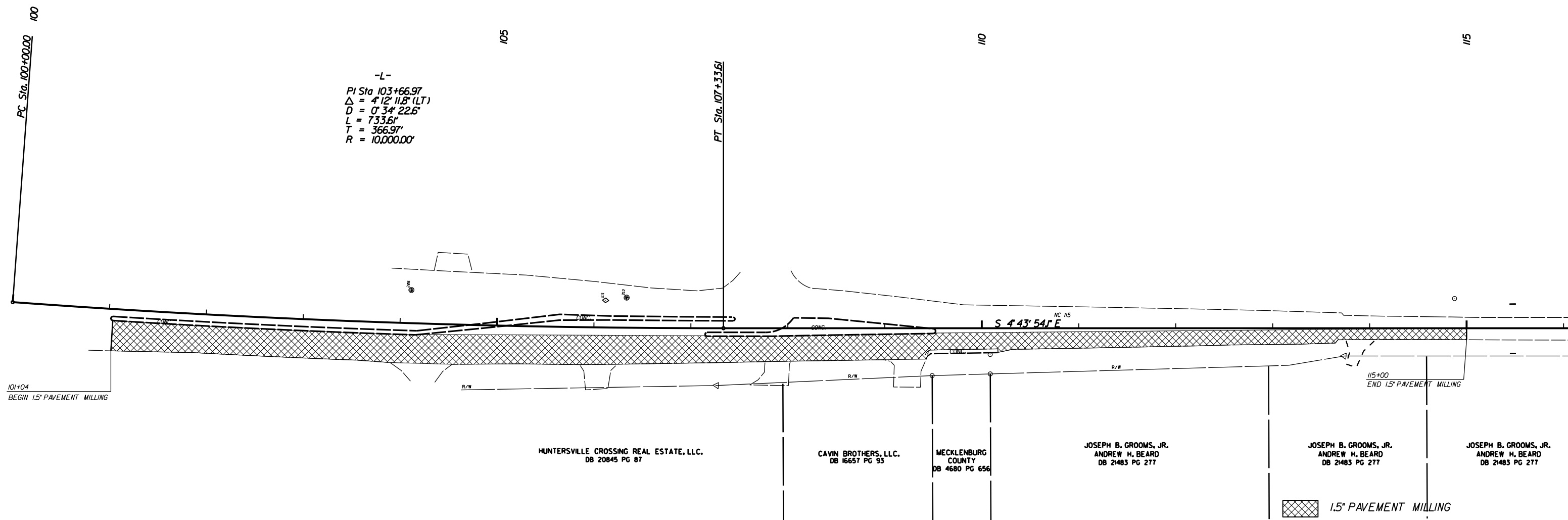


REVISIONS	

STATE	PROJECT NO.	SHEET NO.	TOTAL SHEETS
N.C.	38824.3.3	4	
F.A. PROJECT NO.			



-L-
 PI Sta 103+66.97
 $\Delta = 4' 12'' 11.8''$ (LT)
 $D = 0' 34'' 22.6''$
 $L = 733.61'$
 $T = 366.97'$
 $R = 10,000.00'$



101+04
 BEGIN 1.5" PAVEMENT MILLING

115+00
 END 1.5" PAVEMENT MILLING

HUNTERSVILLE CROSSING REAL ESTATE, LLC.
 DB 20845 PG 87

CAVIN BROTHERS, LLC.
 DB 16657 PG 93

MECKLENBURG
 COUNTY
 DB 4680 PG 656

JOSEPH B. GROOMS, JR.
 ANDREW H. BEARD
 DB 2483 PG 277

JOSEPH B. GROOMS, JR.
 ANDREW H. BEARD
 DB 2483 PG 277

JOSEPH B. GROOMS, JR.
 ANDREW H. BEARD
 DB 2483 PG 277

1.5" PAVEMENT MILLING

EXTENDING RIGHT THROUGH LANE
 AND RIGHT MERGE TAPER
 ON NC 115

SCALE	1"=50'
DATE	3-2015
DWG. BY	JDH
DESIGN BY	JDH
APPROVED	RWB



REVISIONS	

PROJECT: 38824.3.3 TIP: R-2632AC

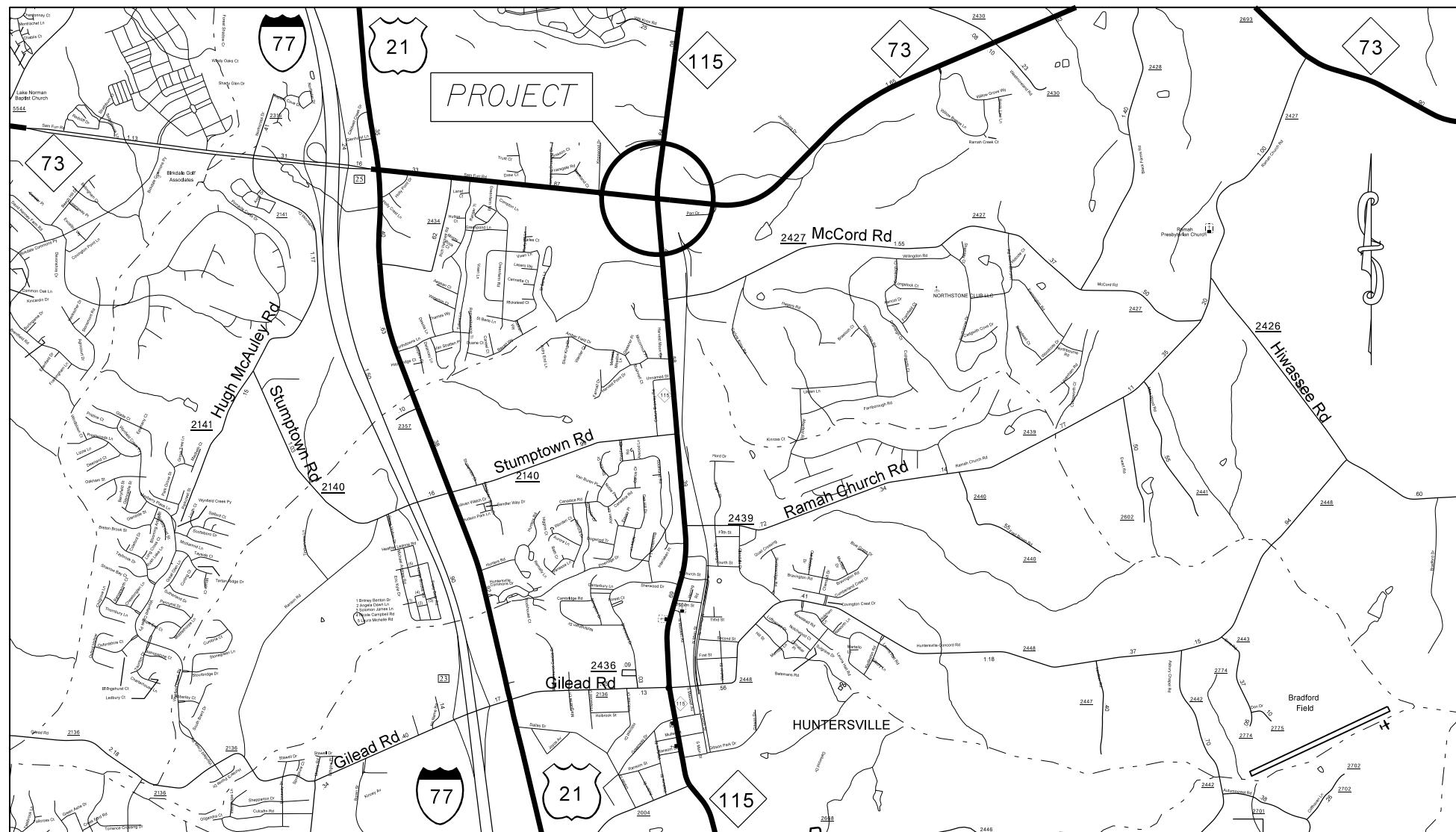
STATE OF NORTH CAROLINA
 DIVISION OF HIGHWAYS
 PLAN FOR PROPOSED
 HIGHWAY EROSION CONTROL

STATE	STATE PROJECT REFERENCE NO.	SHEET NO.	TOTAL SHEETS
N.C.	R-2632AC	EC-1	
STATE PROJ. NO.	F.A. PROJ. NO.	DESCRIPTION	

EROSION AND SEDIMENT CONTROL MEASURES

Std. #	Description	Symbol
1630.05	Temporary Silt Ditch	--- TD ---
1630.05	Temporary Diversion	--- TD ---
1605.01	Temporary Silt Fence	--- III III III ---
1606.01	Special Sediment Control Fence	--- III III III ---
1622.01	Temporary Berms and Slope Drains	--- III III III ---
1630.02	Silt Basin Type B	--- III III III ---
1633.01	Temporary Rock Silt Check Type-A	--- III III III ---
	Temporary Rock Silt Check Type-A with Matting and Polyacrylamide (PAM)	--- III III III ---
1633.02	Temporary Rock Silt Check Type-B	--- III III III ---
	Wattle/Coir Fiber Wattle	--- III III III ---
	Wattle/Coir Fiber Wattle with Polyacrylamide (PAM)	--- III III III ---
1634.01	Temporary Rock Sediment Dam Type-A	--- III III III ---
1634.02	Temporary Rock Sediment Dam Type-B	--- III III III ---
1635.01	Rock Pipe Inlet Sediment Trap Type-A	--- III III III ---
1635.02	Rock Pipe Inlet Sediment Trap Type-B	--- III III III ---
1630.04	Stilling Basin	--- III III III ---
1630.06	Special Stilling Basin	--- III III III ---
	Rock Inlet Sediment Trap:	
1632.01	Type A	--- III III III ---
1632.02	Type B	--- III III III ---
1632.03	Type C	--- III III III ---
	Skimmer Basin	--- III III III ---
	Tiered Skimmer Basin	--- III III III ---
	Infiltration Basin	--- III III III ---

THIS PROJECT CONTAINS
 EROSION CONTROL PLANS
 FOR CLEARING AND
 GRUBBING PHASE OF
 CONSTRUCTION.



GRAPHIC SCALE

0
PLANS

0
PROFILE (HORIZONTAL)

0
PROFILE (VERTICAL)

ROADSIDE ENVIRONMENTAL UNIT
 DIVISION OF HIGHWAYS
 STATE OF NORTH CAROLINA

THESE EROSION AND SEDIMENT CONTROL PLANS COMPLY WITH THE REGULATIONS SET FORTH BY THE NCG-010000 GENERAL CONSTRUCTION PERMIT EFFECTIVE AUGUST 3, 2011 ISSUED BY THE NORTH CAROLINA DEPARTMENT OF ENVIRONMENT AND NATURAL RESOURCES DIVISION OF WATER QUALITY.

Prepared In the Office of:
DDC UNIT DIVISION 10
 DEPARTMENT OF TRANSPORTATION
 DIVISION OF HIGHWAYS
2012 STANDARD SPECIFICATIONS

DONALD HARWARD
 EROSION CONTROL DESIGNER

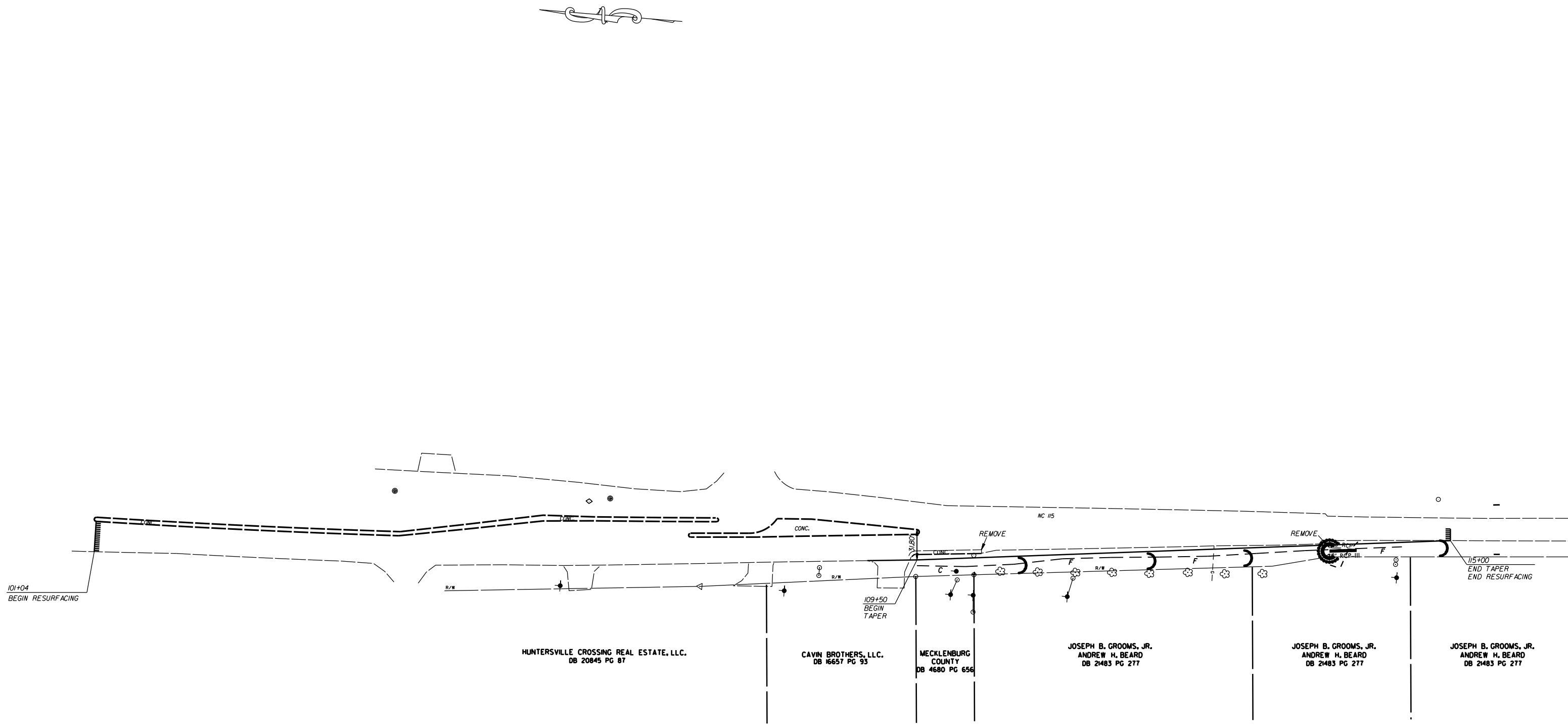
3028
 LEVEL III-A CERTIFICATION #

Roadway Standard Drawings

The following roadway english standards as appear in "Roadway Standard Drawings"-- Roadway Design Unit - N. C. Department of Transportation - Raleigh, N. C., dated January 2012 and the latest revision thereto are applicable to this project and by reference hereby are considered a part of these plans.

1604.01 Railroad Erosion Control Detail	1632.01 Rock Inlet Sediment Trap Type A
1605.01 Temporary Silt Fence	1632.02 Rock Inlet Sediment Trap Type B
1606.01 Special Sediment Control Fence	1632.03 Rock Inlet Sediment Trap Type C
1607.01 Gravel Construction Entrance	1633.01 Temporary Rock Silt Check Type A
1622.01 Temporary Berms and Slope Drains	1633.02 Temporary Rock Silt Check Type B
1630.01 Riser Basin	1633.03 Temporary Rock Silt Check Type C
1630.02 Silt Basin Type B	1634.01 Temporary Rock Sediment Dam Type A
1630.03 Temporary Silt Ditch	1634.02 Temporary Rock Sediment Dam Type B
1630.04 Stilling Basin	1635.01 Rock Pipe Inlet Sediment Trap Type A
1630.05 Temporary Diversion	1635.02 Rock Pipe Inlet Sediment Trap Type B
1630.06 Special Stilling Basin	1640.01 Coir Fiber Baffle
1631.01 Matting Installation	1645.01 Temporary Stream Crossing

STATE	PROJECT NO.	SHEET NO.	TOTAL SHEETS
N.C.	38824.3.3	EC-2	
F.A. PROJECT NO.			



EROSION CONTROL MEASURES MAY BE CHANGED,
IN FIELD AS DIRECTED BY THE ENGINEER.

EXTENDING RIGHT THROUGH LANE
AND RIGHT MERGE TAPER
ON NC 115

SCALE	r=50'
DATE	3-2015
DWG. BY	JDH
DESIGN BY	JDH
APPROVED	RWB



REVISIONS	

STATE	PROJECT NO.	SHEET NO.	TOTAL SHEETS
N.C.	38824.3.3	PMP-1	
F.A. PROJECT NO.			

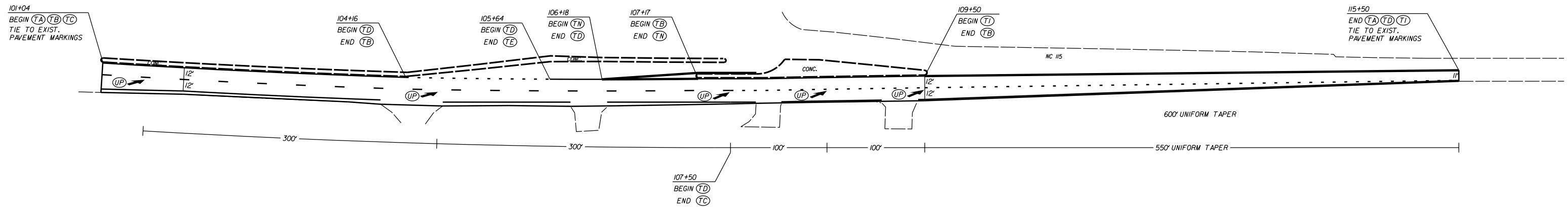
PAVEMENT MARKING SCHEDULE

PAVEMENT MARKING LINES

- | | |
|--|---|
| TA - WHITE EDGELINE (4',.90 MIL) | TU - WHITE DIAGONAL (12',.90 MIL) |
| TB - YELLOW EDGELINE (4',.90 MIL) | TV - YELLOW DIAGONAL (12',.90 MIL) |
| TC - 10FT. WHITE SKIP (4',.120 MIL) | TT - WHITE LINE, RR X (16',.120 MIL) |
| TD - 3FT.-9FT./SP WHITE MINISKIP (4',.120 MIL) | T2 - WHITE STOPBAR (24',.120 MIL) |
| TE - WHITE SOLID LANE LINE (4',.120 MIL) | T3 - WHITE CROSSWALK LINE (24',.120 MIL) |
| TF - 10FT. YELLOW SKIP (4',.120 MIL) | T4 - WHITE RUMBLE STRIP (4',.240 MIL) |
| TH - YELLOW SINGLE CENTER (4',.120 MIL) | T5 - YELLOW RUMBLE STRIP (4',.240 MIL) |
| TI - YELLOW DOUBLE CENTER (4',.120 MIL) | T6 - WHITE EDGELINE (6',.90 MIL) |
| TJ - 10FT. WHITE SKIP (6',.120 MIL) | T7 - YELLOW EDGELINE (6',.90 MIL) |
| TK - 3FT.-9FT./SP WHITE MINISKIP (6',.120 MIL) | T8 - 2FT.-6FT./SP WHITE MINISKIP (4',.120 MIL) |
| TL - WHITE SOLID LANE LINE (6',.120 MIL) | T9 - 2FT.-6FT./SP YELLOW MINISKIP (4',.120 MIL) |
| TM - 10FT. YELLOW SKIP (6',.120 MIL) | T10 - 3FT.-3FT./SP WHITE MINISKIP (12',.120 MIL) |
| TN - WHITE GORELINE (8',.90 MIL) | T11 - 2FT.-6FT./SP WHITE MINISKIP (6',.120 MIL) |
| TO - WHITE DIAGONAL (8',.90 MIL) | T12 - 2FT.-6FT./SP YELLOW MINISKIP (6',.120 MIL) |
| TP - YELLOW DIAGONAL (8',.90 MIL) | T13 - 3FT.-9FT./SP WHITE MINISKIP (8',.120 MIL) |
| TQ - WHITE CROSSWALK LINE (8',.120 MIL) | T14 - 3FT.-9FT./SP WHITE MINISKIP (12',.120 MIL) |
| TR - WHITE SOLID LANE LINE (8',.120 MIL) | T15 - YELLOW SINGLE CENTER (6',.120 MIL) |
| TS - WHITE GORELINE (12',.90 MIL) | T16 - YELLOW DOUBLE CENTER (6',.120 MIL) |
| TT - WHITE SOLID LANE LINE (12',.120 MIL) | T17 - 3FT.-3FT./SP WHITE MINISKIP ENTRANCE LINE (8',.120 MIL) |

PAVEMENT MARKING SYMBOLS

- | | |
|--|--|
| UA - LEFT TURN ARROW (90 MIL) | UU - FISH-HOOK STRAIGHT ARROW (90 MIL) |
| UB - RIGHT TURN ARROW (90 MIL) | UV - FISH-HOOK LEFT/STRAIGHT ARROW (90 MIL) |
| UC - STRAIGHT ARROW (90 MIL) | UW - FISH-HOOK RIGHT/STRAIGHT ARROW (90 MIL) |
| UD - COMBO. LEFT/STRAIGHT ARROW (90 MIL) | UX - FISH-HOOK LEFT/RIGHT ARROW (90 MIL) |
| UE - COMBO. RIGHT/STRAIGHT ARROW (90 MIL) | UY - FISH-HOOK LEFT/RIGHT/STRAIGHT ARROW (90 MIL) |
| UF - COMBO. LEFT/RIGHT ARROW (90 MIL) | UZ - FISH-HOOK W/CIRCLE STRAIGHT ARROW (90 MIL) |
| UG - COMBO. LEFT/RIGHT/STRAIGHT ARROW (90 MIL) | |
| UH - HANDICAP PARKING (90 MIL) | WA - FISH-HOOK W/CIRCLE LEFT ARROW (90 MIL) |
| UI - ALPHANUMERIC CHAR. (120 MIL) | WB - FISH-HOOK W/CIRCLE LEFT/STRAIGHT ARROW (90 MIL) |
| UJ - BICYCLE SYMBOL (90 MIL) | WC - FISH-HOOK W/CIRCLE LEFT/RIGHT/STRAIGHT ARROW (90 MIL) |
| UK - BICYCLE STRAIGHT ARROW (90 MIL) | |
| UL - BICYCLE CHAR. (120 MIL) | MA - PERMANENT RAISED MARKER (YELLOW & YELLOW) |
| UM - 12" YIELD LINE TRIANGLE (90 MIL) | MB - PERMANENT RAISED MARKER (CRYSTAL & RED) |
| UN - 24" YIELD LINE TRIANGLE (90 MIL) | MC - PERMANENT RAISED MARKER (YELLOW & RED) |
| UO - BICYCLE LEFT ARROW (90 MIL) | MD - PERMANENT RAISED MARKER (YELLOW) |
| UP - MERGE ARROW (90 MIL) | ME - SNOWPLOWABLE MARKER (YELLOW & YELLOW) |
| UQ - RAMP ARROW SYMBOL (90 MIL) | MF - SNOWPLOWABLE MARKER (CRYSTAL & RED) |
| UR - SHARROW (90 MIL) | MG - SNOWPLOWABLE MARKER (YELLOW & RED) |
| US - BICYCLE LOOP DETECTOR (90 MIL) | ML - PERMANENT RAISED MARKER (CRYSTAL & CRYSTAL) |
| UT - U-TURN ARROW (90 MIL) | MO - SNOWPLOWABLE MARKER (CRYSTAL & CRYSTAL) |

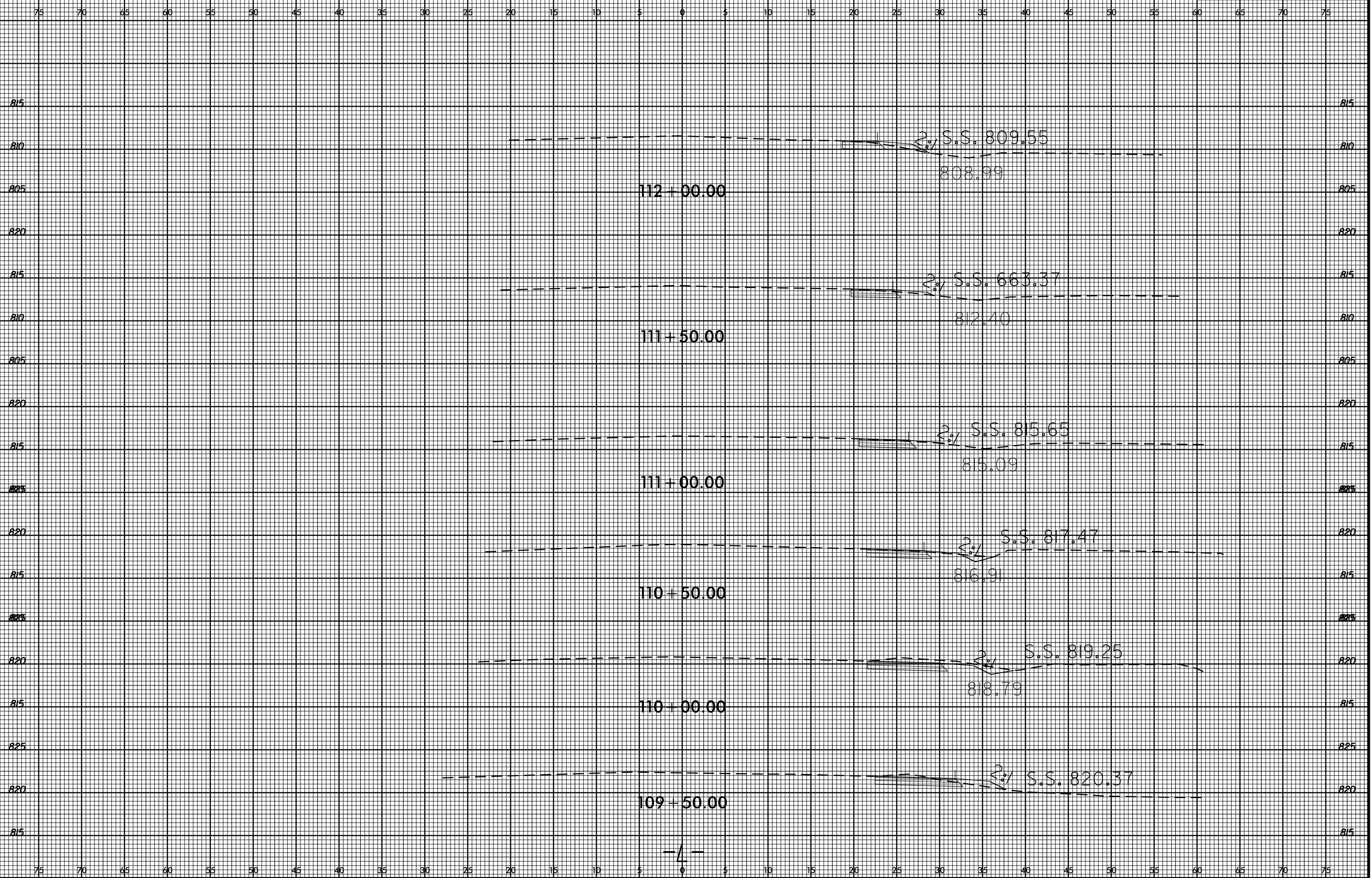


EXTENDING RIGHT THROUGH LANE
AND RIGHT MERGE TAPER
ON NC 115

SCALE	1"=50'
DATE	3-2015
DWG. BY	JDH
DESIGN BY	JDH
APPROVED	RWB



REVISIONS	

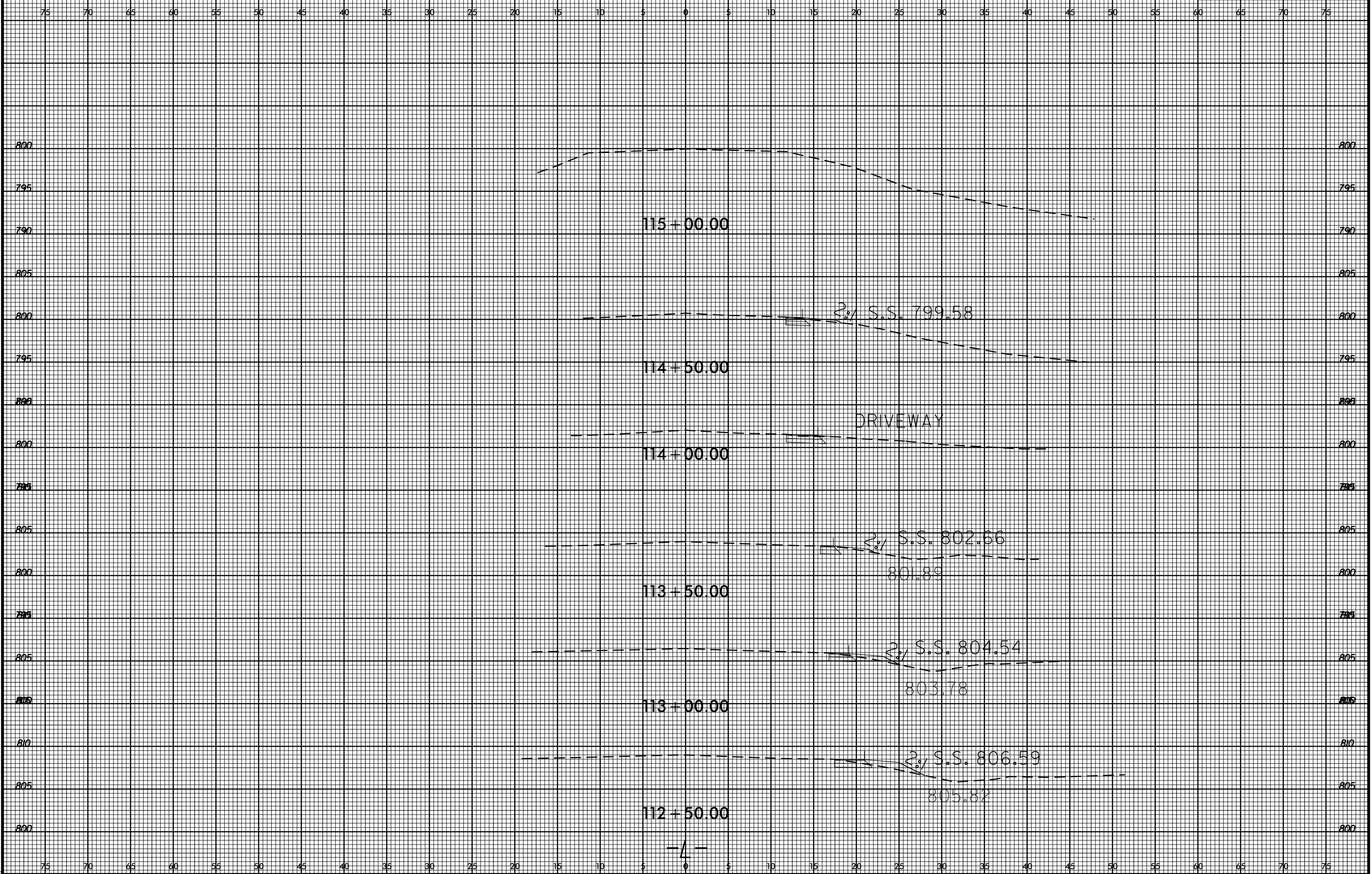


8/23/99



PROJ. REFERENCE NO.
38824.3.3

SHEET NO.
X-2



28-JUL-2015 12:22
 S:\DDC\BOY\Mech\lenbur9\ps115 & nc73\XSC\nc115.nc73.me3.xp1.L.dgn
 idhar word AT 01001VCA027126